

Master ID

Version

Document Name

Type

Date adopted

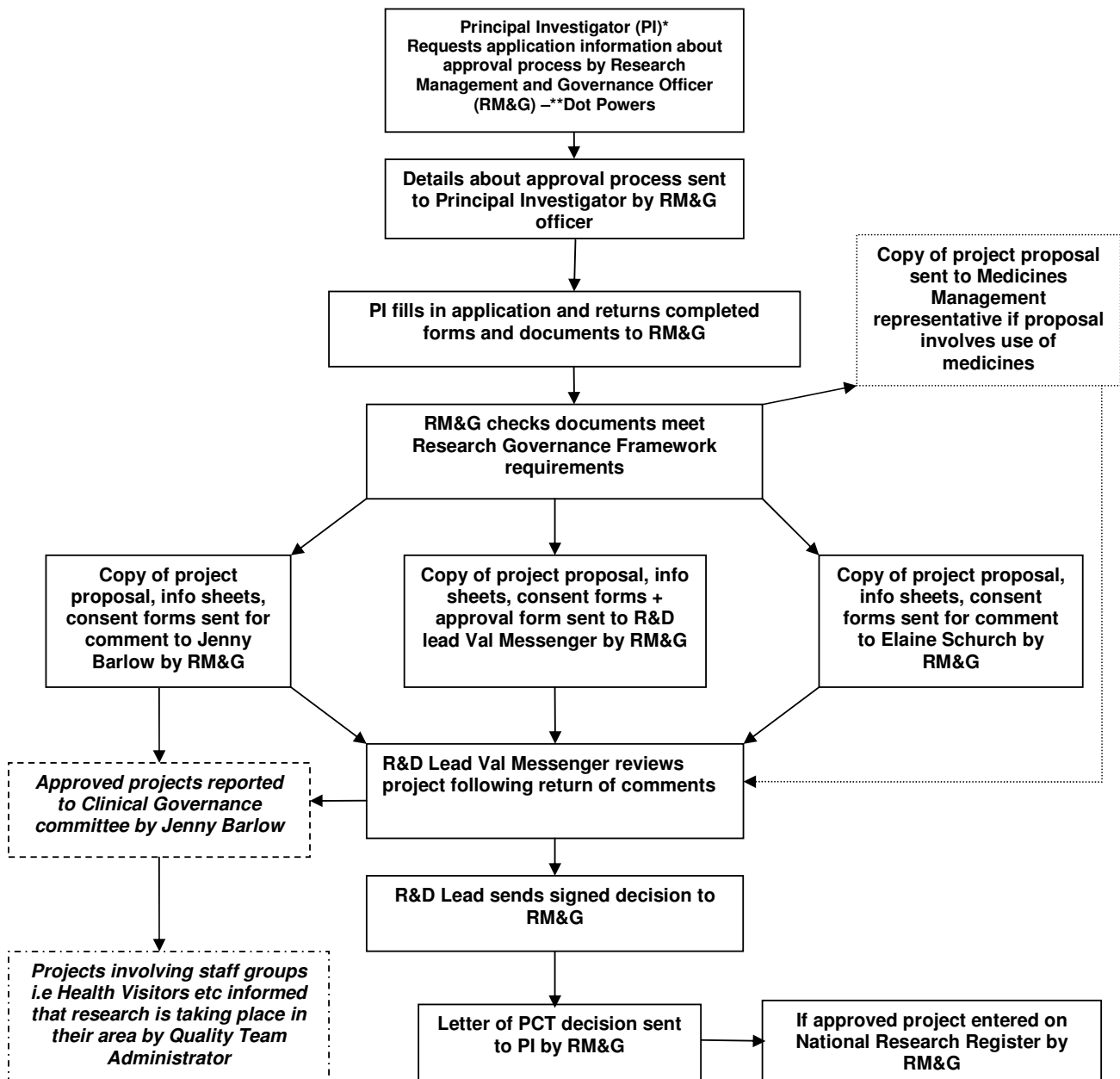
Review Date

Responsibility for Review

Equality Impact Assessment Performed

Approved by

Application Process for Agreeing Research Projects within Oxfordshire Primary Care Trust Interim Arrangements



N.B The standard for reviewing projects and providing a decision within the Thames Valley Primary Care Research Partnership, of which Oxfordshire PCT is a member, is 21 working days

*PI includes anybody interested in undertaking research in the PCT

**The RM&G officer can be contacted via email:

Dot.Powers@Oxfordshirepct.nhs.uk. Anyone wanting advice about undertaking research in Oxfordshire should contact the RM&G

January 2007

To be reviewed June 2007